

# JUNCTION

## MOAMA

THE REGION'S FINEST • A GATHERING PLACE CELEBRATING

---

Rich in heritage and abundant in local produce, Junction is a gathering place celebrating the region's finest.

Junction is located on the stunning Murray River in the picturesque Echuca Moama tourist district. It's the ultimate escape—the perfect spot to enjoy sensational food, wine, cocktails and craft beer that showcases everything the region has to offer in a single, sophisticated setting.

OUR  
SPACES

Junction is a versatile, sophisticated gathering place on the banks of the Murray River in the Echuca Moama tourist district.

Junction lets you create your own unique environment and atmosphere. Whether it's the vibrant space of the Cocktail Lounge or the relaxed Wine Room, there is a space for everyone to enjoy our selection of quality food and premium beverages.

We have created a venue that is in equal parts stylish, elegant and inviting. Junction is a destination for locals and visitors alike—during the day, and long into the evening.

ROOM CAPACITY

WINE ROOM	50 maximum—banquet style 70 maximum—cocktail style
COCKTAIL LOUNGE	40 maximum—cocktail style
DECK AREA WITH CIRCULAR LOUNGE	70 maximum—Indoor 100 maximum—Indoor & Outdoor (Cocktail style only, outdoor area is weather dependent)
HALF VENUE (WINE ROOM, DECK AREA COMBINED)	150 - 200 guests—cocktail style
EXCLUSIVE VENUE (\$500 HIRE FEE)	300 maximum—cocktail style NA Friday and Saturday nights

All function rooms require a \$200 non-refundable hire fee to secure the space and date of event. See T&C's for inclusions.



# THE WINE ROOM

---

The floor to ceiling wall of wine is a key feature of this space and showcases our dedication to the perfect handpicked bottle.

---



FINEST · DISCOVER THE REGION

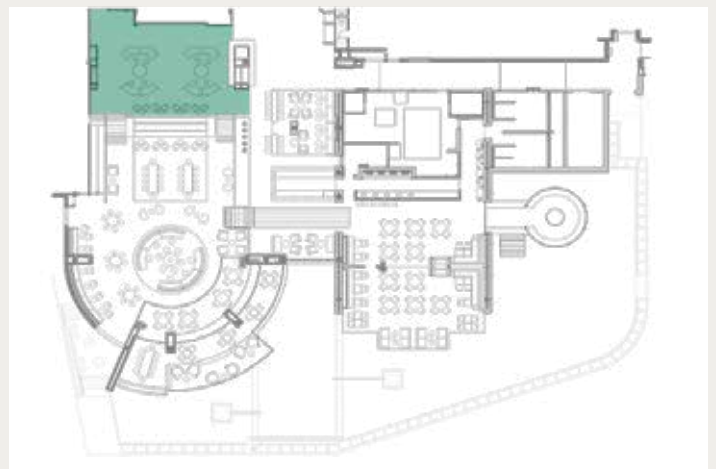
The Wine Room is Junction's premium function space. Offering a unique setting for 50 guests for a sit down event or serves as the perfect area for a cocktail celebration. During Junction's trading hours our Wine Room acts as an intimate area to enjoy the company of friends in a quieter location in booth-style seating. The Wine Room offers a versatile event space to formally dine with guests, or simply enjoy their company in a comfortable setting.

## ROOM CAPACITY

---

WINE ROOM	50 maximum—banquet style 70 MAXIMUM—cocktail style
-----------	---

---



# THE COCKTAIL LOUNGE

---

A welcoming space for guests  
to create an instant impact.

---



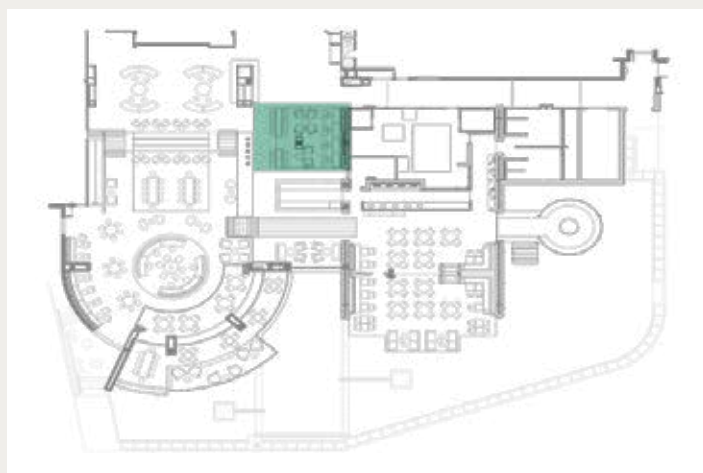
The Cocktail lounge creates a bit of intimacy in what is a spacious venue. Surround your guests in the unique furniture and pendant lighting while they indulge at the main bar with our signature cocktail menu and our delicious canapes.

## ROOM CAPACITY

---

COCKTAIL LOUNGE | 40 maximum—cocktail style

---



DECK AREA WITH CIRCULAR LOUNGE

---

A perfect setting for a cocktail style event streaming with natural light and space for your guests to mingle.

---

DISCOVER THE  
FINEST REGIONS



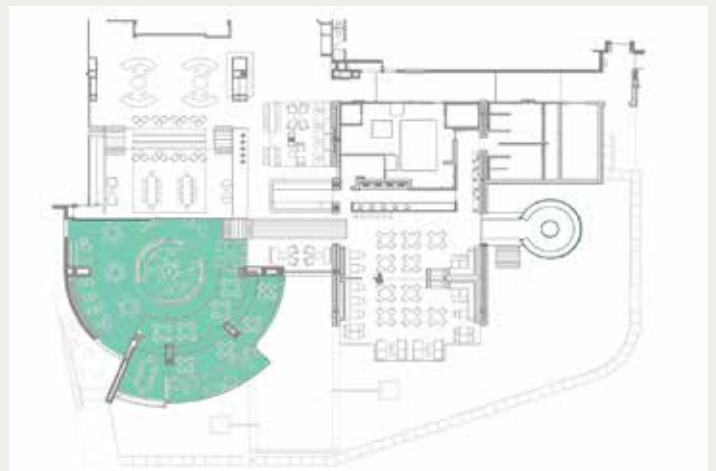
Consisting of two areas including the outdoor seated area directly in front of our fountain and Junction's beautiful garden. Our indoor circular lounge boasts intimacy with our sheer curtain for added privacy and ample seating for a relaxed cocktail event.

ROOM CAPACITY

---

DECK AREA WITH CIRCULAR LOUNGE	70 maximum—Indoor 100 maximum—Indoor & Outdoor (Cocktail style only, outdoor area is weather dependent)
--------------------------------------	---

---



FOOD  
OFFERING

---

Quality food is simply a devotion to the seasonal, local produce and meticulous care in bringing it to life on the plate.

---

At Junction, the emphasis is on a truly social experience and that extends beyond the fantastic shared dining menu into the relaxed, warm environment of the space itself.

We pride ourselves on offering beautiful produce that showcases what the region has to offer. We are always looking for something new and exciting to include in our functions, feel free to make a request if there is something you would like to include.

Ask us about our:

Cheezing grazing station  
Oyster station  
Antipasto

CANAPES:

Choose from a selection of canapés for the perfect cocktail event (minimum 30 people)

---

5 PIECE (LIGHT) | \$25 per person

---

8 PIECE | \$35 per person

---

10 PIECE (SUBSTANTIAL) | \$43 per person

---

SIT DOWN SHARING:

Choose selections from our current seasonal menu with (minimum 20 people, maximum 50 people)

---

FIVE COURSE | \$55 per person

---

SEVEN COURSE | \$70 per person

---

—  
Surcharges apply for specific menu items.



# HIGH TEA

---

Our selection of high tea treats are perfect for your next product launch, business meeting or ladies day.

---

## HIGH TEA

A glass of sparkling wine, selection of tea and high tea menu items.

| \$55 per person

---

## HIGH TEA (MENU EXAMPLE)

---

Flourless orange blossom petite cake (GF)

Chocolate dulce de leche tart with caramel popcorn

Raspberry macarons with marscapone cream (GF)

Tonka bean pannacotta, with nectarine & pink moscato (GF)

Smashed pav, spiced pineapple & mango gel

Homemade doughnuts with strawberry jam & vanilla custard

Smoked salmon bagel with crème fraîche

Poached chicken slider with avocado puree

Croque monsieur

---



# CANAPE MENU

---

## CANAPES SELECTIONS

---

Green tomato bruschetta with buffalo mozzarella (v)

---

Seared tuna, avocado puree, chilli jam & wakami (GF)

---

Corn fritters with ponzu dressing (v) (GF)

---

Blue swimmer crab with spiced watermelon gazpacho (GF)

---

Kingfish miso, pickled shitake & avocado puree (GF)

---

Homemade meatballs in tomato sugo (GF)

---

Lemongrass chicken (GF)

---

Arancini (v)

---

Sweet and Sour silken tofu (v)

---

Scallop dumpling with Korean BBQ sauce

---

Mini wagyu beef sliders

---

Pork san choy bau (GF)

---

Salt and pepper chicken ribs with tamarind glaze (GF)

---

Tempura prawn, lime mayo & tobiko roe

---





## DRINKS

---

Junction's comprehensive drinks list forms an integral part of our promise to provide an unrivalled drinking and dining experience.

---

Junction's comprehensive drinks list combines premium wines and boutique beers, with an impressive and hand-picked selection of local Victorian varietals and craft brews. When you're ready to shake it up (pardon the pun), there's also an exciting line-up of cocktails boasting fresh fruits and herbal flavours. Our regional focus is further complemented by a considered selection of the world's premium spirits which are translated into an exciting cocktail list driven by fresh fruits and herbal flavours. Beverage packages are tailored from our current offering.

---

### FUNCTION BEVERAGE PACKAGE 1:

A selection of wine, beer and soft drink  
at \$53 per person (4hrs).

---

### FUNCTION BEVERAGE OPTION 2:

A selection of wine, beer and soft drink  
at \$30 per person (2hrs).

Beverage inclusions depend on location of function and bar access. See following pages for main bar and pop-up bar details.



## BEVERAGE PACKAGE: MAIN BAR

Access to main bar is dependent on function location and size. Inclusions are:

### FROM THE TAP

Carlton Draught		4.8		7.2
Hawthorn Pale Ale		4.8		7.2
Bridge Road Brewers – Golden Ale		4.8		7.2
James Squire The Constable Copper Ale		4.6		7
Mildura Sunlight Light Beer		4.1		6.2
Mountain Goat Steam Ale		4.8		7.2
Coldstream Apple Cider		5.1		7.5
Innocent Bystander pink Moscato		150ML 8.8		

### INTERNATIONAL BEER

Corona - Mexico		8.2
Peroni Nastro Azzurro - Italy		8.2

### WINE BY THE GLASS

| 8.8

NV	Seppelt Salinger, Grampians, VIC
2015	Delatite Riesling, Mansfield, VIC
2015	Foster e Rocco Rose, Heathcote, VIC
2016	Pizzini Sauvignon Blanc, King Valley, VIC
2015	Toolangi Chardonnay, Yarra Valley, VIC
2015	Innocent Bystander Pinot Noir, Yarra Valley, VIC
2011	Oakridge 'over the shoulder' Cabernet Merlot, Yarra Valley, VIC
2015	Pondalowie Tempranillo, Bendigo, VIC
2013	Wild Duck Creek Yellow Hammer Hill Shiraz / Malbec, Heathcote VIC

All non-alcoholic (soft drink, mineral water, juice)



## BEVERAGE PACKAGE: POP-UP BAR

Pop-up bar can be setup to ensure privacy of function and also ease of service for events. This can either be an add-on to your event, or will be the bar all beverages are served from.

Inclusions are:

### LOCAL BEER

James Squire 'One Fifty Lashes' - Camperdown, NSW		7.7
James Squire 'The Chancer' Golden Ale - Camperdown, NSW		7.7
Stone & Wood 'Pacific Ale' - Byron Bay, NSW		8.2
Grand Ridge Almighty Light - Mirboo North, VIC		6.2
Burleigh Brewing Co. 'Bighead No Carb' - Burleigh Heads, QLD		7.7
Three Troupers Pilsner - Officer, VIC		8.2
Little Creatures Rogers Amber Ale - midstrength - Fremantle, WA		8.2

### INTERNATIONAL BEER

Corona - Mexico		8.2
Peroni Nastro Azzurro - Italy		8.2

### CIDER

Harcourt Apple Cider 500ml		11.5
Harcourt Pear Cider 500ml		11.5

### WINE BY THE GLASS

| 8.8

NV	Seppelt Salinger, Grampians, VIC
2015	Delatite Riesling, Mansfield, VIC
2015	Foster e Rocco Rose, Heathcote, VIC
2016	Pizzini Sauvignon Blanc, King Valley, VIC
2015	Toolangi Chardonnay, Yarra Valley, VIC
2015	Innocent Bystander Pinot Noir, Yarra Valley, VIC
2011	Oakridge 'over the shoulder' Cabernet Merlot, Yarra Valley, VIC
2015	Pondalowie Tempranillo, Bendigo, VIC
2013	Wild Duck Creek Yellow Hammer Hill Shiraz / Malbec, Heathcote VIC

All non-alcoholic (soft drink, mineral water, juice)



CONTACT  
US

---



THE REGION'S  
FINEST · DISCOVER

**Karina Luke**

JUNCTION MANAGER

---

**Chelsea Leslie**

EVENTS & FUNCTIONS COORDINATOR

---

6 Shaw Street  
Moama, NSW 2731

TEL. 1800 806 777  
EMAIL. [chelsea@junctionmoama.com.au](mailto:chelsea@junctionmoama.com.au)

Follow us on Facebook, Instagram & Pinterest  
[@junctionmoama](#)

# TERMS AND CONDITIONS

## GENERAL:

Junction is an over 18 venue at all times.

Junction management has the right to refuse entry and/or ask guests to leave at any time.

Junction's bar will close at 11.45pm for all events, with Junction closing at Midnight.

Dress code is strictly smart casual with no thongs and no hats, this applies to all styles of events and functions.

All meeting times will be agreed upon and organized by Junction staff.

A minimum requirement of 30 guests (cocktail) and 20 guests (sit down) is needed to secure a function space and package.

## BEVERAGE POLICY:

Please note all Junction staff members operate under responsible service of alcohol protocols, and have the right to refuse service to guests.

Strictly no BYO alcohol.

## ACCESS:

Entrance to Junction is at 6 Shaw Street, Moama.

If guests require an alternate form of entry Junction can facilitate with a separate walkway directly into Junction's entrance portal. Please be advised that all guests, regardless of entry point, will need to sign in as a temporary member.

## PARKING:

Off street and parking lot spaces are available. No responsibility is taken by Junction Management for theft or vandalism should they occur within these parking spaces.

## Music:

Junction DJ's play an eclectic mix of contemporary tunes with homage to the ways of the retro and funk. Our DJ's join us every Friday and Saturday night. All other nights, music will be provided by Junction's in house system.

Alternate music arrangements for functions are under Junction management discretion.

THE REGION'S FINEST • DISCOVER



# TERMS AND CONDITIONS

## INCLUSIONS: (BASED ON BOOKING FEE)

- All wait, bar and kitchen staff
- All crockery, cutlery, linen napkins and Junction glassware
- Table menus
- Candles
- Floor and table plans upon request
- Personal meetings with our Function team
- Cleaning of Junction before and after event

## SETUP:

Due to the interior design features of Junction, unless necessary, all current furniture will remain in place for events and functions. Unless otherwise approved by Junction management.

Any table arrangements, table scatters, balloons and any other form of decoration must be approved by Junction management for your event. All setup will be completed on the day of event unless otherwise arranged.

## CONFIRMATIONS, BOOKINGS AND DEPOSIT:

Booking form **MUST** be returned and signed, along with booking fee, with all correct information along with credit card details to confirm booking for required date and location.

A non-refundable \$200 Booking fee is required to secure the date for your event or function (\$500 for exclusive hire). Your booking is not considered confirmed and date not secured until this form has been completed and fee paid.

If a cancellation of the event or function is to occur, all cancellations must be made in writing and the following applies:

Cancellation made within:      14 days of event: 50% charge of catering costs  
  7 days of event: 100% charge of catering costs

Final guest numbers and payment are required 14 days prior to event. These will be the numbers you will be billed for even if numbers decrease. This number refers to the number of adults attending the event, inclusive of any other guests, photographers etc. Payment will be deducted from nominated credit card if final payment is not made by 14 days prior to event.

If beverages are purchased on consumption, payment of bar tab is required at finishing time of event.

If a booking is made within this 14 day timeframe, payment must be made in full on finalization of booking, no later than 7 days before event. All bookings made within this timeframe must be approved by Junction management.



# TERMS AND CONDITIONS

## PUBLIC HOLIDAYS

Restricted bookings will be available on Public holidays/Long weekends. An increase in booking fee to \$500 will apply for all Public Holidays and related weekends.

A 15% increase on beverage and catering costs will apply to all public holidays.

## MENU:

All menu choices and dietary requirements are to be confirmed 14 days prior to event. Along with any seating plans and guest names.

All menus are subject to change due to seasonal availability.

## EXTRAS:

Special occasion cakes will need to have a signed waiver form attached before acceptance by Junction staff. No cakes are to have cream or perishable fruit.

Cake cutting and service (platter style) can also be arranged at \$3 pp.

Please note Junction's outside areas are all smoke free, with the exception of the labeled smoker's area we provide for guests.

PA systems are available within Junction upon request. Please note all audio will not be turned off for speeches (unless the event is exclusive), however zones can be turned down. All music will continue to play for other guests within Junction during this time.

## MARKETING AND PROMOTIONAL MATERIAL:

For all invites, publications and promotional items please refer to Junction as:

Junction Moama, 6 Shaw Street, Moama.

## DISCLAIMER:

All quoted prices are valid until 31st December 2017. In the event of a price increase you will be notified accordingly.

